

the FLA FLASH

A quarterly publication of the Florida Lighthouse Association, Inc.
www.floridalighthouses.org

QUARTERLY MEETING TO BE AT THE ST. AUGUSTINE LIGHTHOUSE!

THE PRESIDENT'S LETTER

Anyone who missed the events at the Anclote Keys Meeting really missed a winner. We had a record 215 people in attendance for the meeting as we glided out to Anclote Key on mill-pond smooth seas aboard the paddle-wheeler "Starlight Princess." It was an event which will be difficult to top, although we will keep trying. I want to thank Executive Vice-President Wayne Hawes and his crew for the top-notch job they did in coordinating this great experience. The St. Augustine meeting and Tour of the NE Florida Lighthouses should also prove to be exciting and wonderful events, and we hope you will send in your reservation forms (included in this newsletter) for these events.

CONTENTS

Letter from President	1
Anclote Key/Egmont Meeting.....	2
October 2002 Qrtly Mtg	4
St. Augustine/July Qrtly Mtg....	4
Tour of the NE Lighthouses.....	5
State History Fair.....	7
FLA'S Website Column.....	8
Lighthouse Reports.....	9
New Members.....	10
Annual Appeal.....	10
Information Updates (FLA contact information).....	10
Miscellaneous Items	11

The Annual Appeal Campaign for Crooked River has been doing okay, but it is a bit slow. I would like to see us reach our goal as quickly as possible. We have over 600 members in the FLA. I know that many of us have already given to the Crooked River Fund in the past year, but if each of us could just send in one more check for just \$10 more, we would reach our goal. Please help us! Just \$10, and we will be able to give a check with pride to the Carrabelle Lighthouse Association in the near future. Thank you for thinking of Florida's Lighthouses!

FIRST ANNUAL FLA PHOTO CONTEST

David Hanko is the Chairman of the First Annual FLA Photo Contest and he is absolutely EXCITED about it. David reports the rules as follows:

1. The Contest is only open to FLA members in good standing.
2. Photos submitted must only be of Florida lighthouses.
3. Submitted photos must be 8X10 unmounted and unframed.
4. Photos may be in either color or Black & White.
5. Each photo entered must have the entrant's name, address, telephone number and name of the lighthouse.

6. All photos submitted become the property of the FLA.

7. Submission deadline is SEPTEMBER 1, 2002.

All submissions must include a \$5.00 entry fee per photo payable by either check or money order. Please make your form of payment payable to "Florida Lighthouse Association" and forward it, along with your photo, to:

FLA PHOTO CONTEST
C/O DAVID HANKO
PHOTOGRAPHY
5150 4th Street No.
St. Petersburg, FL 33703

LETTERS OF SUPPORT NEEDED FOR THE CAPE SAN BLAS LIGHTHOUSE

Send all your letters to: St. Joseph Historical Society, "The Constitution City", Post Office Box 231, Port St. Joe, FL 32457

Please address your letter to:
Mr. Fred Gaske, Bureau Chief
Bureau of Historic Preservation
R.A. Gray Building
500 South Bronough Street
Tallahassee, FL 32399-0250

Letter of Support for: Gulf County Board of County Commissioners and St. Joseph Historical Society.

Seeking: Historical Resources Grants-in-Aid, Special Category Grant; Purpose of Grant: Restoration and Renovation of Cape San Blas Keeper's quarters and Cape San Blas Light; Talking Points: Use after restoration - educational purposes, museum, public tours. Also include economic impact to area and cultural values. For further information contact the Society at: 850-227-1475; Fax: 850-229-6963.

CONFIRMATIONS OF RESERVATIONS NOW AVAILABLE FOR MEETINGS/FLA TOURS

Alice and David D'Amicol, our most wonderful Meetings Co-VP's, are now offering the option of confirmation through U.S. Mail service. You MUST provide a self-addressed, stamped envelope and they will forward confirmation of your reservation.

The D'Amicol's would like everyone to be aware that no checks are cashed before the event has occurred. Also, only registrations on the official forms are acceptable. E-mails or telephone calls do not act as a reservation.

FLA PAYS A VISIT TO ANCLOTE & EGMONT KEY LIGHTHOUSES

by Barbara McClure
ANCLOTE KEY

On April 20th FLA members gathered at the Marker 1 Marina in Dunedin to board the *Starlight Princess* Riverboat for an adventure at sea. The 3 mile journey from Tarpon Springs across blue Gulf waters was made effortlessly. The sky was bright and the sun was hot but it did not stop anyone from enjoying one of the most magical

trips presented to FLA members. Many thanks go to Larry McSparren, Wayne Hawes and all the members of the Gulf Islands GEOPark, the Gulf Islands Alliance Citizens Support Organization, Tampa Chapter of Harbour Lights and the Tarpon Springs Historical Society, who hosted and attended to the needs of the membership.



Special guests of the day were Scott Robinson, Manager of the Gulf Islands GEOPark, Larry McSparren, President of the Gulf Island Alliance, Andrew Staab, Retired US Coast Guard, who served at Anclote Key Light when it was active, Mitch Kolbe, the fantastic artist who donated 1,000 Anclote Key prints to be sold and the monies used for restoration purposes, Toby Brewer, Assistant Park Manager of Werner Boyce State Park and Connie Wiesham, Park Ranger of Anclote Key who will be the keeper once restoration is complete and the keepers dwelling built.

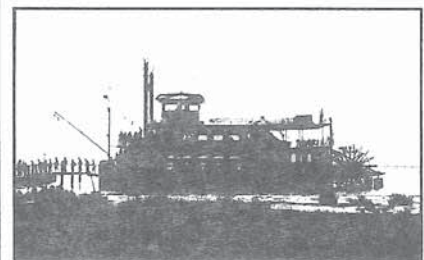


The meeting began shortly after arrival aboard the *Starlight Princess*

when Wayne Hawes announced the special guests and acknowledged Valerie Lengo as Historian of Anclote Key Lighthouse as well as the publisher of the *30 Second Flash*, and the Gulf Island Alliance members and Tampa Chapter of Harbour Lights who pulled together to cleanup Anclote Key before the FLA arrived.



Several victims of the Island's fauna were displayed and the FLA thanked them for their selflessness and offered to keep them supplied with Benadryl and anti-itch creams. The Island is overrun with poison ivy and sumach and these volunteers cleaned the Lighthouse areas to make sure that the majority of the FLA membership would not come into contact with the evil plants. Tom Taylor thanked Robert Emmens for his donation of FLASH, a Fresnel lens, which has become the official Mascot of the FLA.



Before we all knew it we had arrived at Anclote Keys and were

strolling on a newly built walkway which was conveniently placed over the marshes. Andrew Staab, who had been stationed on Anclote Keys when it was an active lighthouse, was quick to comment that he didn't remember the Lighthouse as being so far away. A cursory view of old photographs taken of the Island indicate that he would be correct. No erosion of coastal land has occurred at Anclote Keys as they have gained several feet of land from the original waterline.



The remnants of the original oil house were visible as well as the foundation of the keepers' homes. The lighthouse itself is rusted and in need of major repairs. The



members gathered around the open door well and had their pictures taken, glancing inside and upward. Everyone agreed that the stairwell itself could not be trusted.

After returning to the beautiful Riverboat and feasting upon the catered meal, the meeting continued with the presentation by



Treasurer, George Diller to Lee Cook of the St. Marks Lighthouse, with a check for \$12,175.00 to be used for the restoration of the Lighthouse. George added that so far the FLA has raised \$6,985.00 for the Crooked River Campaign. Lee Cook thanked the FLA and its members for their contributions. The St. Marks Lighthouse was at the top of 43 grant applicants and the State of Florida will match our contribution. St. Marks plans on establishing a gift shop and museum in the keeper's quarters once restoration has been completed.



The grand finale of the meeting was the presentation of the Lifetime Achievement Awards to Hib Casselberry and Paul Bradley in honor of their more than 30 years of dedication to the restoration of lighthouses. Two finer examples of outstanding citizenship cannot be found than with Hib and Paul. All present lighthouse lovers, as well as future ones, will benefit from their efforts. Thank you, Hib and Paul. Coming back to the Marker 1 Marina, the FLA members began chattering about the next day's round of events at Egmont Key. Nursing sunburns but with full bellies they disembarked overwhelmed at the great trip to Anclote and the wonderful service provided by the staff of the *Starlight Princess*.

EGMONT KEY TOUR
by Captain Richard Johnson



The Egmont Key Alliance hosted a visit by 150 FLA members on Sunday, April 21st. Transportation was provided by Hubbard's Sea Adventures of John's Pass. Alliance members Gregory Wilson, Irma Wehle, John and Barbara Schmidt, Cindi Para, and Richard Johnson welcomed the visitors to the Key. The base of the lighthouse tower was open to visitors, as was the oil house and the radio room, where a video featuring historic photos of Egmont Key and Ft. Dade was shown. Visitors also saw the coast artillery batteries of Ft. Dade, and the Ft. Dade Guardhouse, which the Egmont Key Alliance is rehabilitating for use as a visitors and education center for the Island. Gopher tortoises also put in an appearance for the FLA members

OCTOBER, 2002 MEETING/TOUR TO BE AT SANIBEL ISLAND LIGHTHOUSE

Plans are currently in the works for the October, 2002 meeting to be held at Sanibel Island Lighthouse. The meeting is scheduled for Saturday, October 12th. Tours to Boca Grande may be made available for Sunday, October 13th. More information will follow in the next Newsletter.

CEDAR KEY OPEN HOUSES:
Two Open Houses for Cedar Key Lighthouse located at the Cedar Keys National Wildlife Refuge are scheduled for Saturday, July 6th, only, and again the weekend of October 3rd. Visitors may use their own boat to get to the island or use the Island Hopper Tour Group, 352-543-5904. Their tours begin at 8:30 a.m. with the last boat departing at 2:30 p.m. The costs are \$12.00 per adult and \$6.00 per

child, plus tax and is on a first come, first serve basis.

JUNE, 2002 QUARTERLY MEETING AT ST. AUGUSTINE LIGHTHOUSE By Ray Hamel



FLAGS TO FLY FOR FLA IN ST. AUGUSTINE

Scores of fluttering lighthouse flags will fly overhead as FLA members cross St. Augustine's historic Bridge of Lions to Anastasia Island on the way to the black and white striped beacon that overlooks St. Augustine Inlet. News of your arrival will precede you, and the St. Augustine Lighthouse and Museum is proud to host the FLA quarterly meeting on July 20, 2002!

We are excited that the GSA will send several senior representatives to discuss the process of lighthouse turnover from the Coast Guard to private ownership. As of this writing, the application of ownership has been forwarded to the appropriate parties by the St. Augustine Lighthouse and Museum. This process is part of an expected exchange of ownership, meant to be a prototype for other lighthouses. The GSA reports that they are anxious to meet with the FLA to prepare the way for other

lighthouse transfers in the state of Florida. This aspect of the meeting should prove valuable for all attending.

Following the morning meeting and luncheon at the Ponce Hotel, Saturday afternoon will be devoted to St. Augustine Harbor with three boat tours, the current Lighthouse and Museum, the Maritime Archaeology Lab, and the site of Florida's First Lighthouse. This site is particularly historic because it is one of the first permanent man-made aids to navigation in the New World. We will also tour the Inlet, which we believe looks very much like it did when Menendez sailed into St. Augustine in 1565.

The second floor of the keepers' house (now a museum) will exhibit the Arnold Shore photo collection, of which FLA member David Hanko is the current curator. This area will also offer refreshments provided by the St. Augustine Lighthouse and Museum throughout the afternoon.

The event should be a wonderful opportunity to learn a great deal about Florida's lighthouses, and of course there is the old world charm and history of beautiful St. Augustine! We extend to all FLA members a warm St. Augustine welcome... Please join us in July!

History of the St. Augustine Lighthouse

The St. Augustine Lighthouse of today is actually the second lighthouse tower to stand in St. Augustine. The earliest predecessor of today's St. Augustine Lighthouse dates back

to the late 1500s, when the Spanish first built a wooden watchtower on Anastasia Island. In 1737, an existing coquina and wood building replaced the succession of wooden watchtowers that had been built over the years. The coquina structure officially became Florida's first lighthouse in 1824 (Florida became a U.S. territory in 1821).

The first St. Augustine Lighthouse was a white square tower with a black top and was constructed of coquina, wood, iron and copper. The tower's light originally came from Winslow Lewis Argand lamps with ten 14-inch reflector panels. A fourth order Fresnel lens was installed in the tower in 1855. During the Civil War, the mayor of St. Augustine, Paul Arnau, removed the lens from the lighthouse to prevent Union troops from using it to aid their war effort. Although he returned the lens, the light was not relit until 1867.

In the late 1860s, the U.S. government made efforts to save St. Augustine's lighthouse, which was threatened by erosion from the sea. It was finally determined that a new lighthouse should be built further inland, and so construction of St. Augustine's current lighthouse tower began in 1871. On October 15, 1874, the first order Fresnel lens was lit in the "new" St. Augustine Lighthouse for the first time. The old tower was decommissioned and only six years later, in 1880, fell into the ocean during a summer storm.

Constructed of Alabama brick, Philadelphia iron and Georgia granite, the lighthouse is St. Augustine's oldest brick structure. There are other materials such as marble, copper and steel in the tower as well. Nearly everything in

the tower at present is original, including the cast iron spiral staircase. The tower rises 165 feet above sea level and contains 219 steps to the observation deck. St. Augustine's first order Fresnel lens consists of 370 hand-cut glass prisms arranged in a beehive shape and measures 12 feet tall and six feet in diameter. The beacon can be seen 19-25 miles out to sea. The daymark of the St. Augustine Lighthouse has always been black and white spiral stripes with a candy red top. Its nightmark is a fixed flash every 30 seconds. Today, the St. Augustine Lighthouse remains an active aid to navigation.

The keepers' house, built in 1876, is a duplex that housed up to three light keepers and their families at any one time. In 1970, vandals set fire to the house, after which only the exterior walls were left standing. Due to safety concerns, St. Johns County was planning to bulldoze the remains of the house when the Junior Service League of St. Augustine stepped in and began a 15-year campaign to restore both the keepers' house and the tower. The house was opened to the public as a museum in 1988. The museum has a collection of more than 650 pieces including lighthouse tools, navigational aids and household goods that give visitors a glimpse into what life was like for the light keepers and their families. Shipwreck artifacts discovered through the Lighthouse Archaeological Maritime Program (LAMP) provide insight into the rich and varied maritime history found just off the coast of the nation's oldest port city.

In May of 1993, the restored St. Augustine Lighthouse tower was

re-opened to visitors amid a community-wide celebration. More than 180,000 visitors now come from all over to tour the Light Station each year.

The future of the St. Augustine Lighthouse and Museum is a bright one. The St. Augustine Lighthouse and Museum, Inc., the non-profit organization that maintains the Light Station property, is currently in the process of applying to obtain ownership of the tower itself from the Federal government. We are proud and excited to be leading the way in this groundbreaking process for all lighthouses across the country.

TOUR OF THE NE FLORIDA LIGHTHOUSES

Due to popular demand, the FLA is sponsoring a tour of the Northeast Florida Lighthouses on the two days immediately preceding the St. Augustine meeting in July. Participants will meet at the Ponce de Leon Resort in St. Augustine on Thursday, July 18th. We will have a special tour orientation meeting and history program of the involved lighthouses at the resort at 8:30 PM.

On Friday morning, we board the bus at 7:30 AM for the ride north to Amelia Island. We will arrive at the lighthouse by 9:00 AM, where Hal Belcher, President of the Amelia Island Lighthouse and Museum, Inc., will present to us a special program about the lighthouse and the various range light systems which were associated with it. Helen O'Hagan Sintes, daughter and granddaughter of two keepers of

the lighthouse, will also be on hand to tell us about life at the lighthouse.



The Amelia Island Lighthouse is the oldest extant lighthouse in the State of Florida, having been built here on Amelia Island in 1839. Actually, the materials in the lighthouse, including Florida's only New England granite stairway, date before that, as the lighthouse was originally built on the south end of Cumberland Island in Georgia, in 1820, by Winslow Lewis. This was before Florida became a territory of the United States, and the then-Cumberland Island Lighthouse was the most southern in the United States. Because this lighthouse is just about to undergo a major restoration by the City of Fernandina Beach, who now owns it, we will not be able to ascend the tower. However, we will get to look inside and see the granite steps and get some great exterior shots.

We next will head over to Fort Clinch State Park where we will see two sites related to the range light system that we learned about from Hal Belcher. One of these sites right on the beach, that of the



North. Amelia Rear Range Light, is often under sand or underwater. However, Hal tells me that there is now a marker commemorating the lighthouse, and we might be lucky enough to see the remains of the chimney base of this "house-style" lighthouse. Also in the center of the park are the remains of the Willow Pond Range Light which includes the oil house and the brick foundations for this skeletal tower. We will learn some very interesting new things from Hal's talk and this visit to the range light sites.



At 11:30 AM, we need to be on the bus leaving Fort Clinch State Park to catch the 12:15 ferry across the St. Johns River to Mayport. We will have lunch at Singleton's Seafood Shack, one of the most famous seafood restaurants in Florida. After lunch, we will board the bus to enter the Naval Station Mayport. On this military base are two standing lighthouses, built almost a

century apart. The group will split into half to visit each of these towers. The 1859 St. Johns River Lighthouse, commonly called the "Mayport" Lighthouse, was the third tower built to mark the entrance to the St. Johns River. Each of the previous towers, built in 1830 and 1835, eventually succumbed to erosion. However, this tower has stood on this site for nearly 150 years and is on the National Register of Historic Places. The original doorway of the tower was covered with about 6 feet of fill, so we will have to enter through a window to see the inside. The lighthouse was decommissioned in 1929 and was replaced by a lightship off the mouth of the St. Johns River.



The St. Johns Light Station was built in 1954 and is the youngest official lighthouse in

Florida and the last one built as a manned station. It was built in the Art-Deco style and featured a modern, radical optic, of which only two were ever used in the United States. This original optic and its lantern were removed a few years ago and today reside in the back yard of a local Coast Guard office. Hopefully, it can be rescued and put on display someday. This lighthouse is still active today, using a modern Vega lens. Andy Liliskis is currently working on the arrangements to try to get us

inside both of these towers. However, as security requirements at the base have changed so dramatically since September 11th, we cannot at this time guarantee that we will have interior access, but, if anyone can do it for us, Andy can.

After visiting these two lighthouses, at about 5:00 PM, we will again be on board the bus heading back to St. Augustine. We should be back at the Ponce de Leon Resort no later than 6:30 PM. Supper will be on your own.

The cost of this tour which includes 2 nights at the prestigious Ponce de Leon Resort, bus tour, visits to five lighthouses and lighthouse sites, and lunch at Singletons' Seafood Shack is \$300 for double occupancy and \$400 for single occupancy. There will be extra snacks and drinks aboard the bus for your convenience. Be sure and drink lots of liquid. It will be hot, and we will be having a very active day. To register for this tour, please mail your check with the TOUR Registration Form provided with this newsletter. If you also plan on attending the St. Augustine meeting and events, you must send a separate check with the Registration Form for that event. We have to do this to keep our accounting straight. Thank you for your cooperation. We look forward to seeing you at BOTH of these great events!

***TOUR OF THE NORTHEAST
FLORIDA LIGHTHOUSES,
JULY 18-19, 2002***

THURSDAY, JULY 18TH: Check into the Ponce de Leon Resort in St. Augustine, Florida.

8:30 PM Special orientation and

informational program
FRIDAY, JULY 19TH:

7:30 AM Board bus for Amelia Island Lighthouse

9:00 AM Arrive at the Amelia Island Lighthouse: Due to deterioration, we will not be able to climb the lighthouse, but Hal Belcher will provide a special program about the lighthouse and the range lights associated with it. We will be able to enter the ground level of the lighthouse and look up at the only New-England-style granite stairway in Florida.

10:00 AM Board the bus, drive to Fort Clinch State Park. Visit the sites of the Willow Pond and North Amelia Rear Range lights.

11:30 AM The bus departs for Mayport down Route A-1-A, crossing 12:15 PM ferry to Mayport.

12:30 PM Lunch at Singleton's Seafood Shack, 4728 Ocean Street, Mayport, FL 32233, (904) 246-4442.

2:00 PM The bus will leave for the Mayport Naval Station. The first group (about 23 persons) will be dropped off at the 1954 to visit the St. Johns Light Station, and the second group will go on to the 1859 St. John's River Lighthouse. At about

3:30 PM the groups will change places.

5:00 PM The bus brings its second group back to the 1859 lighthouse, picks up the group there and departs for St. Augustine.

6:30 PM The bus arrives back at the Ponce de Leon Resort in St. Augustine.

**State History Fair
by Dianne Levi**

On May 3rd, the final judging of the statewide history fair projects took place at Florida State University, Tallahassee. This year there were more than 600 students from 27

counties who had been chosen to exhibit after winning in their respective counties. Four of those exhibits dealt with lighthouses representing the State's theme of "Revolution, Reaction, Reform In History".



The FLA awards of saving bonds were to be given to three winners of the senior historical papers with lighthouse themes, but there were no entries that met the criteria. However, there were 4 lighthouse exhibits and the Florida History Fair Committee did agree that the students who created these exhibits should receive the book "The Florida Lighthouse Trail" in recognition of their work. Substituting for the FLA Education Chair Hib Casselberry,

Dianne Levi and husband Gordon attended. On Friday the 3rd, Dianne viewed the exhibits and met with the students while Gordon took pictures. On Saturday, May 4th, the Awards Ceremony took place in the auditorium at Leon High School.

The following received recognition for their interest in lighthouses: Eric Pitt, 8th grader at Fort White High School, Columbia Co. "The History of Florida Lighthouses", Junior Individual Exhibit Bethany Mihalik, 8th grader at Deer Lake Middle School, Leon Co. "The

Fresnel Lens: Revolutionizing Lighthouse Optics”, Junior Individual Exhibit, Kimiko King & Melissa Gunter, 8th graders at W. E. Cherry Elementary, Clay Co. “Reconstruction of the Pensacola Lighthouse”, Junior Group Exhibit, Meagan Morris, Angie Padgett, Gaby Salas from Ecuador, Jessica Breman, & Matt Kramer, Wewahitchka High School, Gulf Co. “Seizing of the Light”(Confederates at Pensacola during the Civil War), Senior Group Exhibit.



There is great interest in the Florida lighthouses among the students, teachers and parents. It has been recommended by the State History Fair Committee and teachers that FLA expand its awards next year to the historical paper and exhibit categories in both the junior and senior divisions, possibly even to the performance and documentary entries. I thank FLA and Hib for the opportunity to attend and meet these outstanding students.

FLA'S WEBSITE

By Tim & Lynda VeArd

We have posted Phase I of the FLA's new Gallery on the website (www.floridalighthouses.org).

When you click on the GALLERY button on the HOME page's left side, a menu with several options appears. You can choose Paul Bradley's pen & ink sketches of Florida lighthouses or his many sketches of other lighthouses around the country. You can also view photos submitted by FLA members that are randomly displayed on the HOME page and other groups of images we will post in the future.

We will use Paul's Florida sketches to explain how this section works. If you are not familiar with his work, Paul designed FLA's logo and illustrated the Florida Lighthouse Trail book. The Florida group starts with a map that Paul drew to show which lighthouses are in his gallery. Click on the area near or the name of any lighthouse and a screen will "pop-up" displaying his sketch of it. Click the CLOSE button and the pop-up disappears, letting you click on any of his 44 sketches.

On top of Paul's map you can choose to see all sketches as thumbnails (small view) or see a LIST of all lighthouses in his gallery. You can page through the thumbnails, 8 at a time, using keys on the bottom of the page. Click on a thumbnail to pop-up a larger sketch or click the link to view a photo of that lighthouse. On the Tour page for each lighthouse, there is a thumbnail of Paul's sketch which you can click to pop-up a larger view.

If you LIST all lighthouses, you will see the status and location of all lighthouses. Click on any name to pop-up its sketch. Like the LIST on the Tour, click the arrow heads

near the underlined column title to rearrange the lighthouses in ascending or descending order. Click the column title to search by that topic to refine the list to show only lighthouses that match what you enter.

CAPE CANAVERAL LIGHTHOUSE FOUNDATION FORMED

by Barbara McClure

On May 20th the Cape Canaveral Lighthouse Foundation and the 45th Space Wing entered into a Memorandum of Agreement to support each other in the maintenance and restoration of the Cape Canaveral Lighthouse. At a celebration hosted by the Air Force, General Donald P. Pettit and CCLFI President, Chris Lehnertz, publicly signed the Agreement which acknowledges the cooperation of the Air Force and CCLFI in maintaining and restoring the Lighthouse. The Foundation was created in March, 2002, with the purpose of assisting the 45th Space Wing in preserving, protecting, and interpreting the Cape Canaveral Lighthouse and its historical significance to the Florida Space Coast, State of Florida and our Nation. The Executive Board consists of Chris Lehnertz, President, Kay Witt, Vice-President, Bill Britz, Treasurer, and Barbara McClure, Secretary. Board Members are Rose Wooley, Historian and Newsletter Editor, Dr. David Paterno, Stan Holtschneider, Ron Larivee, Dr. Nick Wynne, Capt. Ed Lanni, Bill Barnes, Dr. Lori C. Walters, and George Diller. Non-voting Membership in the Foundation is as follows: Local Superintendent (Life & Permanent) \$10,000.;

Commissioner \$1,000.; Inspector \$500.; Head Lighthouse Keeper \$100.; Lighthouse Keeper (Individual) \$50.; and, Assistant Lighthouse Keeper (Individual) \$35.00. The Foundation address is: P.O. Box 372012, Satellite Beach, FL 32937 and the website address is www.canaverallight.org. The Foundation, in cooperation with the 45th SW, will be hosting several events in the upcoming months beginning with the June 8th Inaugural Picnic. Membership will include a silver Canaveral Lighthouse Foundation Pin and placement on the invitation list for upcoming events. It is necessary to remember that this Lighthouse is on an active military base and thus, events involving the Foundation may not always be permitted on the Lighthouse grounds nor are their any guarantees that a member will have an opportunity to tour this Lighthouse. However, the Foundation and its membership and the 45th SW look forward to the benefits of cooperation and the restoration of the Lighthouse.

LIGHTHOUSE REPORTS

Amelia Island: See NE Tour article above. Hal Belcher says he's busy preparing for the tour and that it "should be most informative."

Anclote Keys: Wayne Hawes hopes everyone had a great weekend visiting Anclote Keys & Egmont Keys Lighthouse. His group enjoyed hosting the event and look forward to inviting everyone back in a couple of years to see the completed project. The boardwalk from the dock to the lighthouse walkway should be finished by the end of May. The specifications for the Rangers residence is scheduled to go to bid around the first of June.
Boca Grande: Marilyn Hoeckel

reports that the lighthouse is open Wed. - Sunday, 10 AM to 4 PM and closed the month of August. Exhibits include the history of Boca Grande from the days of the Calusa Indians to the present, and pictorial histories of both the Port Boca Grande Lighthouse and the Coast Guard Rear Range Light on Gasparilla Island.

Cape Canaveral: The engineering design work for the oil house restoration at the Cape Canaveral Lighthouse is 90% complete. However, there is no record that can be found regarding from what material the roof was made. There is a reference in an early U.S. Coast Guard document to a "metal" roof of some kind, but from other similar oil house designs at Ponce Inlet and Jupiter Inlet it is believed to have been either copper or tin. A photograph shows that at some later point in time it was replaced with a tar paper roof. The Ponce Inlet oil house originally had a copper roof while Jupiter Inlet had tin. The intent of the Cape Canaveral Air Force Station is to do an authentic historical restoration so a search continues for what was, or most likely was, the composition of the Cape Canaveral oil house roof. The restoration work is expected to begin in August and be completed by the end of the year.

Cape Florida: No Report.

Cape San Blas: See Letters of Support article above.

Cape St. George: No Report.

Cedar Keys: See Open House article above.

Crooked River: The City of Carrabelle received the deed to the lighthouse and property last August. The Carrabelle Lighthouse Association has set up an operating agreement with the City of Carrabelle. The original lens for the

Lighthouse was found in a Coast Guard Station in New Orleans. It may be the first Bi-Valve Lens to be used in the United States.

Dry Tortugas: No Report.

Egmont Key: See Egmont Key article above.

Hillsborough Inlet: Replacement of all Australian Pines with native Florida trees has begun. The next tour of this lighthouse will be on October 5th.

Jupiter Inlet: No Report.

Pensacola: Renovations continue at the Pensacola Lighthouse, so no summer opening date yet. The original keeper's room has been restored and the light tower painted. Now the entire 1869 keepers two story duplex house is being painted.

Ponce Inlet: On May 10, 2002, the Cambrian Foundation and archaeologist, Kim Eslinger completed a two week underwater survey of the S.S. Commodore for the Lighthouse Association. The Commodore was carrying guns and ammunition to Cuba when she sank in a gale on January 2, 1897. On board was Stephen Crane, author of the novel "Red Badge of Courage." He later wrote a famous short story about the experience called "The Open Boat" in which he related the difficulties of getting to shore in a small lifeboat in towering seas. The Lighthouse Association holds an Admiralty Claim on the wreck and is in the initial stages of attempting to place it on the National Register of Historic Places.

Reef Lights: The Florida Keys Reef Lights Foundation has made application for federal income tax exemption as a 501(c)3, non-profit corporation. It will be several months before the Foundation

gets word as to its acceptance. An inspection tour of the Carysfort Reef Lighthouse on May 11th had to be canceled due to high winds and heavy seas. Burt Bender is completing his report to the state on the condition of the reef lights. Tom Taylor will be going with him in July to examine the American Shoal Lighthouse; that is the last reef light that needs to be inspected.

Sanibel Island: Sanibel Light is being considered to host the October Quarterly Meeting. More information to follow.

St. Augustine: See July Quarterly Meeting information above.

St. Johns: See NE Tour article above.

St. Joseph Point: No Report.

St. Marks: An assessment is currently being done on the condition of the lighthouse. The St. Mark's Wildlife Refuge is hoping to get access to the lighthouse from the Coast Guard so it can be opened to the public after restoration. Also, see Anclote Tour article above.

NEW MEMBERS

We wish to welcome the new members who have joined us in the past quarter: Cal & Shirley Barnlund, Ruth Cummings, Heidi Denis, Paul & Janet Eckstein, James & Florrie Fay, Michael & Glenda Fought, Robert & Donna Frost, Carol & Jerry Greeno & Family, Jim Mady, Dominick Pagano, Andrew Staab, Bell & Jim Stewart, Martin Vanoy, Martin & Micaela Zydell.

CROOKED RIVER CONTRIBUTIONS

Second Quarter, 2002

Barbara and Ray Hamel, Paul Bradley, Jr., Joan Hudiburg, Ruth

A. Erlandson, Philip Tanev, Maureen and Tom Workman, Andrew Arno, Rod and Judy Eason, Lisa Feagin and Ken Menard, Pamela B. Ray, Thomas D. Buzard, George H. Diller.

Please note that only money to be donated to the Crooked River Campaign should be mailed in the envelopes provided with this newsletter.

INFORMATION UP-DATES

NEW MEMBER DUES GET RESTRUCTURED:

By Linda Koestel

It was decided by the Board of Directors to restructure the way "New Member" dues are calculated. Since all memberships are renewable in October and our meetings and newsletter are based on a quarterly basis, so to will the dues for the first year or part of the year that people join FLA. All returning member dues are the same and due in October.

Check or money order to Membership VP, Linda Koestel, 1072 Grizzly Ct., Apopka, FL 32712-3059. You can check your membership card or the address label on this newsletter for your expiration date.

FLA BOARD MEMBERS/COMMISSIONER DIRECTORY, JUNE, 2002

CONTACT INFO:

Thomas W. Taylor, President:
Tom_fla@hotmail.com
Wayne Hawes, Executive Vice-President:
whawes1@tampabay.rr.com
Linda Koestel, Vice-President for Membership:
lkoestel@worldnet.att.net
Bonnie Jean Exum, Secretary:

bjexum@floridalighthouses.org
Alice & David D'Amicol, Co-Vice-Presidents for Meetings and Special Events:

meetings@floridalighthouses.org

Judie Trotter, Co-Vice President for Fund Raising:

jtrotter@cfl.rr.com

Geneva Hopkins, Co-Vice President for Fund Raising:

genevaimages@aol.com

George H. Diller, Treasurer/Cape Canaveral:

george.diller-1@ksc.nasa.gov

Richard A. Johnson, Dist. 3
Commissioner: Captrj@aol.com

Ann Caneer, Past-President, Ponce de Leon Inlet Lighthouse:
lighthouse@ponceinlet.org

Neil Hurley, Historian:
lthouse@erols.com

Hib Casselberry, District 1
Commissioner:

lighthouse-fl@usa.com

Brenda Altmeier, District 2
Commissioner:

brenda.altmeier@noaa.gov

Barbara Revell, District 4
Commissioner: benbar7@aol.com

Amelia Island Lighthouse: Hal Belcher, Amelia Island Lighthouse and Museum, Inc.:

hal@net-magic.net

St. Johns River (Mayport) Lighthouse: Andy Liliskis, Mayport Lighthouse Association, Inc.:

beaks@fdn.com

St. Augustine Lighthouse: Kathy Fleming, St. Augustine Lighthouse and Museum, staughl@aug.com

Jupiter Inlet Lighthouse: George Blanck, grblanck@msn.com

Cape Florida Lighthouse: Lee Niblock, Park Manager, capefla@gate.net

Key West Lighthouse & Reef Lights: Claudia Pennington, Key West Art & Historical Soc., (305) 295-6616

Sanibel Island Lighthouse: Charles LeBuff, SanybelCL@aol.com

Gasparilla (Port Boca Grande) Lighthouse: Marilyn Hoeckel, Barrier Island Parks Society, (941) 697-7750

Anclote Key Lighthouse: Gulf Island GEO Park, (727) 469-5942

Cedar Keys Lighthouse: Kenneth Litzenburger, Refuge Manager, (352) 493-0238

St. Marks Lighthouse: BMC David Justice, USCG, (850) 234-8139

Crooked River Lighthouse: Barbara Revell, benbar7@aol.com

Cape Canaveral Lighthouse Foundation: Chris Lehnertz, President, clehnertz@surfink.com

Cape St. George Lighthouse: John Lee, no known e-mail address.

Cape San Blas Lighthouse: Director, Environmental Management, Eglin, AFB

St. Joseph's Point Lighthouse: Privately Owned.

Pensacola Lighthouse: Dianne D. Levi, dle@infi.net

Ponce Inlet Lighthouse: Ann Caneer, lighthouse@ponceinlet.org

David Hanko, Photo Contest: jackalope@earthlink.net

FLAFLASHNEWS: Barbara McClure, Editor, 2610 Via San Marino Court, Merritt Island, Florida, 32953; (321) 453-7202 (No Calls after 10 p.m.)
E-Mail: flash@floridalighthouses.org

SQUELCHING A RUMOR

Geneva Hopkins did not climb the Anclote Key Lighthouse. The truth behind the rumor is that the Ranger took the newspaper PHOTOGRAPHER up to the top of the lighthouse.

SUPPORT CROOKED RIVER LIGHTHOUSE!

The *FLA FLASH* is a quarterly publication of the FLORIDA LIGHTHOUSE ASSOCIATION, INC., and is a benefit of membership in the organization. The FLA is a non-profit Florida corporation which promotes the preservation of Florida's lighthouses and interprets the history and significance of those light-houses and of Florida's unique maritime heritage. For information, contact: Florida Lighthouse Association, P. O. Box 34-0028, Tampa, FL 33694-0028
Phone: (813) 968-5640 Option 3
Fax: (813) 960-2065

WSite: www.floridalighthouses.org

E-mail: info@floridalighthouses.org

Tom Taylor, President

Wayne Hawes, Executive V-P

Linda Koestel, Membership V-P

David & Alice D'Amicol, Meeting V-P

Judie Trotter, Fund Raising V-P

George Diller, Treasurer

Neil E. Hurley, Historian

Ann Caneer, Past President

BOARD OF COMMISSIONERS

Brenda Altmeier

Allyne Askins

Harold Belcher

George Blanck

David Butler

Ann Caneer

Him Casselberry

George Diller

CWO Steve Elsassar, USCG

Kathy Fleming

Marilyn Hoeckel

Richard A. Johnson

Chief David B. Justice, USCG

Charles LeBuff

Dianne Levi

Andy Liliskis

John Lee

Larry McSparren

Lt. Col. Michael Newberry, USAF

Lee Niblock

Kevin O'Brien

Cindi Para

Danny Raffield

Barbara Revell

Perry Smith

Bill Trotter

FLA FLASH, Barbara McClure, Editor

Paul Bradley, Graphic Artist

THE FLORIDA QUARTER

by Barbara McClure

At a recent meeting Judie Trotter presented to the Board the news that Gov. Jeb Bush was seeking submissions for the artwork/design of the new Florida Quarter. Tim & Lynda VeArd quickly jumped on the bandwagon and submitted a proposal to the Governor on behalf of the FLA. Many thanks Tim & Lynda for the fine job you did and the quickness in which you did it in.

THE CARYSFORT LIGHTHOUSE GHOST

by Barbara McClure

[Taken in part from a story in May 2002 Lighthouse Digest written by Shirley Vanderbilt]

Most of us love ghost stories, especially the ones that focus on lighthouse ghosts. There was a whole television special devoted to hauntings and phenomena at lighthouses. This is the first story I had read about the Carysfort Lighthouse ghost though. According to the article written by Ms. Vanderbilt, in 1852 the first keeper of Carysfort Lighthouse was a Captain Johnson. He soon died at the lighthouse. Apparently many keepers reported that mysterious sounds, moans and shrieks were being made. Charles Brookfield became intrigued with the ghost story and in 1927 he spent the night at the lighthouse. He heard the moans himself and began to look for another explanation. The moans it seemed were apparent mainly in the summer months and he suggested

that the expansion and contraction of the metal framework were the cause of the noises.

REMINDER

August 7th is National Lighthouse Day! Wave those Lighthouse Flags high!

AVAILABLE FROM THE LIGHTHOUSE DEPOT

Tim Myers is going to release his second mystery in the Lighthouse Inn Mystery series titled *Reservations for Murder*. His first novel, *Innkeeping with Murder*, was named as an Agatha Award Nominee and made the IMBA National Bestseller list. To order call 1-800-758-1444.

NOW HERE'S AN OPPORTUNITY!

Check out the Thacher Island Lighthouse website at www.thacherisland.org and learn how you can apply for training as a Lighthouse Keeper. Thacher Island is located in Rockport, MA.

INTERESTED IN LIGHTHOUSE ANTIQUES?

If any of you are interested in buying or valuing lighthouse antiques check out Kenrick A. Clafin & Son Nautical Antiques website:

www.lighthouseantiques.net or e-mail him with questions at jclafin@lighthouseantiques.net.

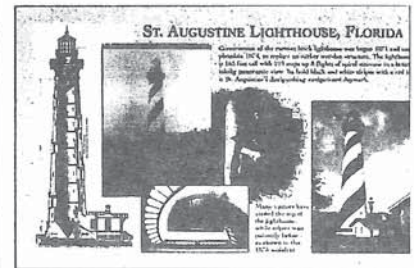
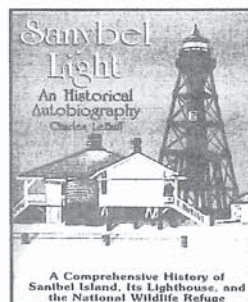
**SUPPORT CROOKED RIVER LIGHTHOUSE !!
MAIL YOUR \$ TODAY!!**

Take a look at the old photograph of Crooked River Lighthouse below. See the men walking on the beams? They are working to complete the Lighthouse. The picture was taken in 1895. Many more old lighthouse photos can be found in John Hairr's *Images of America: Florida Lighthouses* published by Arcadia Publishing. You can call 1-888-313-BOOK to order a copy.



Photo credits to U.S. Coast Guard Archives

STUDY UP for the FLA's Quarterly Meeting to be held at Sanibel in October by reading Charles LeBuff's *Sanybel Light*. Released originally in 1998, contact Amber Publishing, Post Office Box 493, Sanibel, FL 33957-0493 for availability. It is a must read for all Florida Lighthouse lovers and cultural historians.



One of my favorite postcards I have collected over the years of St. Augustine Lighthouse. Here you can see the interior design, what it looked like in years past, a stairwell view and a clear picture of the tower. It's truly a beautiful Lighthouse and a not to miss meeting opportunity!!

And to end our Newsletter for this Quarter, on March 6, 2002 the Press-Tribune ran a newspaper article featuring myself and my husband, Mark, and our love of lighthouses. It was a lot of fun discussing our history with lighthouses and our collection. Many hits on our FLA Website were noted after the article ran, which was something Mark & I were aiming at. The photographer, Rik Jesse, of the Florida Today, did an outstanding job capturing the essence of this lighthouse nut as you can see below.



**FLORIDA LIGHTHOUSE ASSOCIATION QUARTERLY MEETING
ST. AUGUSTINE LIGHTHOUSE, ST. AUGUSTINE, FLORIDA
SATURDAY, JULY 20, 2002**



The third Quarterly Meeting of the Florida Lighthouse Association will be hosted by the St. Augustine Lighthouse and Museum. The morning program will be at the Ponce de Leon Hotel in St. Augustine. You will be responsible for making your own hotel reservations.

We recommend the Ponce de Leon Hotel which has extended a special rate to FLA Members. Following the program and luncheon, everyone will proceed to the Lighthouse using their own transportation, where the first 180 people registered will be divided into three groups. The formal tour itinerary will include 1) Boat tour of the harbor, 2) Tour of the Lighthouse and Keeper's House, and 3) Free time for refreshments in the Keeper's House Gallery, shopping in the store where a 10 % discount will be offered to FLA members, and tour of the Archaeology Lab. On Sunday, we have made arrangements for discount admissions to several local attractions. A list will be provided at the time of registration.

SCHEDULE FOR SATURDAY, JULY 20, 2002

- 8:45am – 9:30am Registration in the hotel lobby
- 9:30am – 10:30am Quarterly Meeting of the Florida Lighthouse Association
- 10:30am – 11:30am Welcome – Kathy Fleming, Director of the St. Augustine Lighthouse and Museum
GUEST SPEAKER, MR. JOHN KELLY, General Services Administration, Atlanta, Ga.
- 11:15am – 12:00pm Auction/Raffles
- 12:00pm – 1:00pm Luncheon – Hot Buffet
- 1:15pm Proceed to the Lighthouse-Tours begin at 2pm
- 5:00pm Return to hotels or home-Keep the lights shining!!

.....cut here.....cut here.....
ST. AUGUSTINE EVENT RESERVATIONS – LUNCH & AFTERNOON TOURS
 Reservation Deadline June 25, 2002 ****Please name each person ****

NAMES (please print) _____
 ADDRESS _____
 CITY _____ STATE _____ ZIP _____ E-MAIL _____
 TELEPHONE: HOME () _____ OFFICE () _____
 LUNCHEON No. of persons _____ x \$23.00 per person =\$ _____
 BOAT TOUR No. of persons _____ x \$ 5.00 per person =\$ _____
 TOTAL ENCLOSED \$ _____

Please make your check or money order payable to the Florida Lighthouse Association, Inc. Mail this form and your payment to:
 David and Alice D'Amicol, 128 Peacock Dr., Altamonte Springs, FL 32701
 E-mail adamicol@cfl.rr.com Tel. 407-331-9468

SUGGESTED HOTELS - FLA MEETING - ST. AUGUSTINE - JULY 2002

FLA MEETING LOCATION

****PONCE DE LEON HOTEL****

4000 US 1 NORTH
FLA SPECIAL RATE \$79 STD
904-824-2821 \$99 CABANA

BEST WESTERN

2010 No. Ponce de Leon
\$79 / \$71 AAA/AARP
904-829-9088

ECONO LODGE

I-95 & SR16
\$49
904-824-4306

EDGEWATER INN

2 St. Augustine Blvd.
Fri. \$69-89/ Sat. \$79-115
904-825-2697

HAMPTON INN

2050 No. Ponce de Leon
\$115 (Offer AAA/AARP Disc.)
904-829-1996

SLEEP INN (Near Lighthouse)

601 Anastasia Blvd.
\$77 (AAA/AARP Disc. 10%)
904-825-4535

BED AND BREAKFASTS

ST. FRANCIS INN (Mary)

279 St. George St. - \$109
904-824-6068

VICTORIAN HOUSE (Ken)

11 Cadiz St. - \$109
904-824-5214

CASA DE SOLANA (Mary)

21 Aviles St. - \$109
904-824-3555

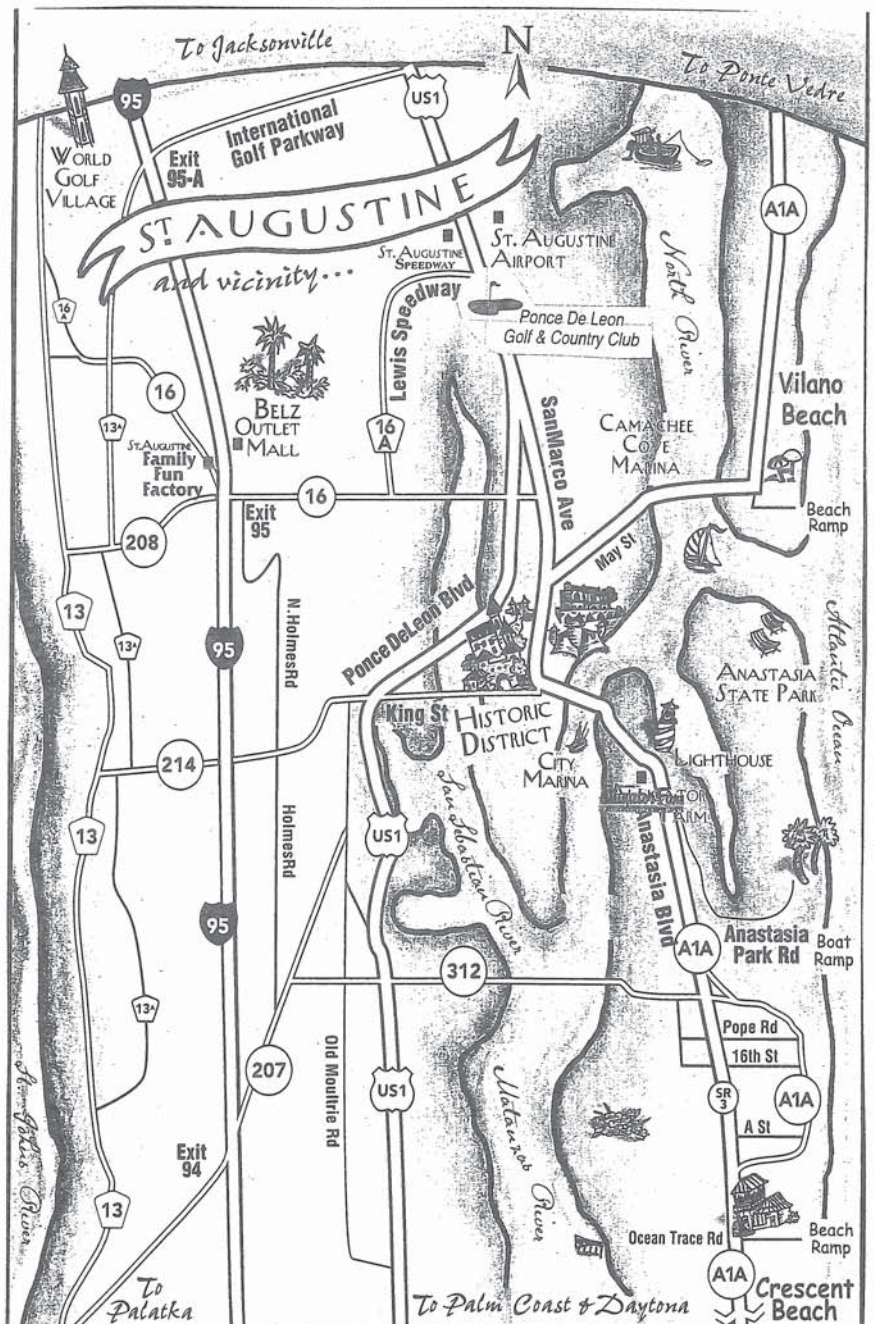
BEACH LOCATIONS

HAMPTON INN

430 A1A Beach Blvd.
\$129-169 904-471-4000

HILTON GARDEN INN

401 A1A Beach Blvd.
\$129-139 904-471-5559



PETITION FOR A FLORIDA LIGHTHOUSE SPECIALTY LICENSE PLATE

I/We, the undersigned, hereby state my intent to purchase a Florida LIGHTHOUSE specialized license plate, if approved by the legislature and offered by the Department of Highway Safety and Motor Vehicles.

By signing this petition, I/we understand that the plate would carry an additional cost of \$15 annual use fee, plus a \$2 processing fee per year per vehicle. I/we certify that I am/we are the legal owner/lessee of a motor vehicle registered in the State of Florida, and said vehicle is eligible for a specialty license plate.

	PRINTED NAME	SIGNATURE	ADDRESS	CITY	ZIP
1					
2					
3					
4					
5					
6					
7					
8					
9					
10					
11					
12					
13					
14					
15					
16					
17					
18					
19					
20					

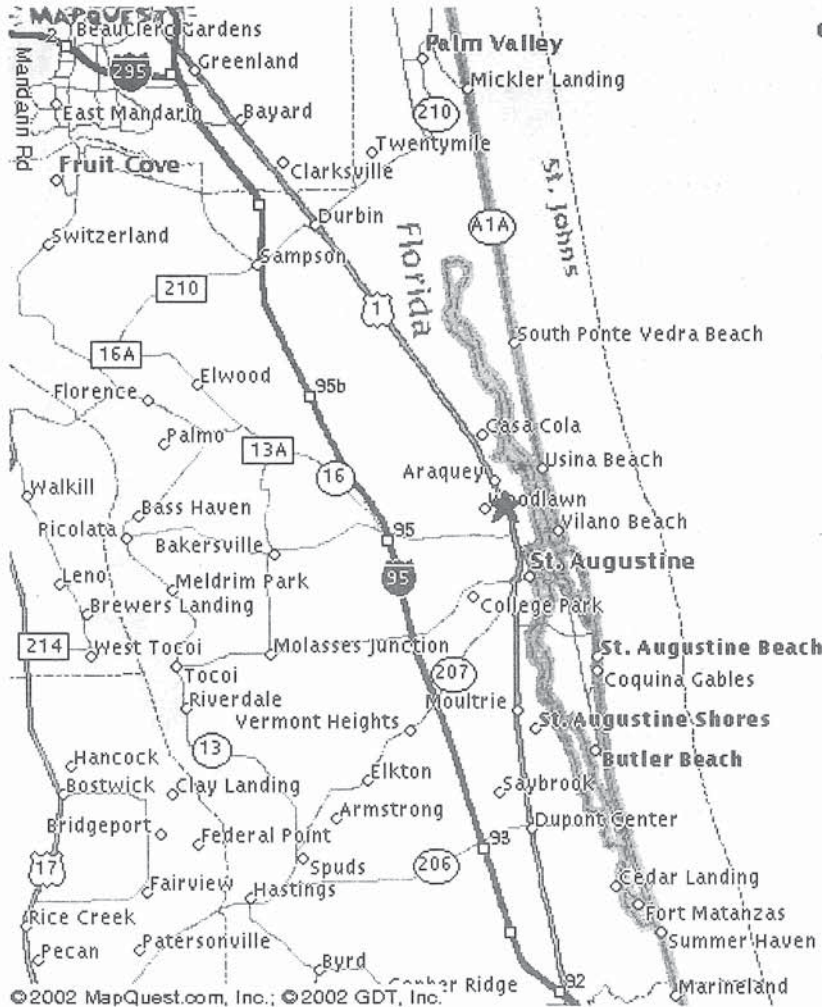
RETURN TO: THE FLORIDA LIGHTHOUSE ASSOCIATION, INC.
P. O. BOX 34-0028
TAMPA, FL 33694-0028
(813) 968-5640 OPTION 3



4000 Us Highway 1 N
St Augustine, FL
32095-1668, US

SEND TO PRINTER

Back



© 2002 MapQuest.com, Inc.; © 2002 GDT, Inc.

All rights reserved. Use Subject to License/Copyright



MAPQUEST™

how to get there!

MAPQUEST™

how to get there!

This map is informational only. No representation is made or warranty given as to its content. User assumes all risk of use. MapQuest and its suppliers assume no responsibility for any loss or delay resulting from such use.

Privacy Policy & Legal Notices
© 2002 MapQuest.com, Inc. All rights reserved.



Florida Lighthouse Association, Inc.

P.O. Box 340028, Tampa, FL 33694-0028

Phone: (813) 968-5640 (Option 3); Fax: (813) 960-2065

Website: <http://www.floridalighthouses.org> E-mail: info@floridalighthouses.org

TOUR OF THE NORTHEAST FLORIDA LIGHTHOUSES JULY 18-19, 2002

On July 18-19, 2002, the Florida Lighthouse Association will sponsor a Tour of the Northeast Florida Lighthouses. This tour will include two nights at the prestigious Ponce de Leon Resort in St. Augustine, a deluxe coach bus tour of five lighthouses or lighthouse sites in the Amelia Island and Mayport, Florida, areas, and lunch at the famous Singleton's Seafood Shack in Mayport, Florida. Cost for the tour is \$300 for double occupancy and \$400 single occupancy. The present itinerary for the tour appears below:

TOUR OF THE NORTHEAST FLORIDA LIGHTHOUSES, JULY 18-19, 2002

THURSDAY, JULY 18TH: Check into the Ponce de Leon Resort in St. Augustine, Florida.

8:30 PM Special orientation and informational program

FRIDAY, JULY 19TH:

7:30 AM Board bus for Amelia Island Lighthouse

9:00 AM Arrive at the **Amelia Island Lighthouse**: Due to deterioration, we will not be able to climb the lighthouse, but Hal Belcher will provide a special program about the lighthouse and the range beacons associated with it. We will be able to enter the ground level of the lighthouse and look up at the only New-England-style granite stairway in Florida.

10:00 AM Board the bus, drive to Fort Clinch State Park. Visit the sites of the **Willow Pond** and **North Amelia Rear Range** lights.

11:30 AM The bus departs for Mayport down Route A-1-A, crossing 12:15 PM ferry to Mayport.

12:30 PM Lunch at **Singleton's Seafood Shack**, 4728 Ocean Street, Mayport, FL 32233, (904) 246-4442.

2:00 PM The bus will leave for the Mayport Naval Station. The first group (about 23) will be dropped off at the 1954 to visit the **St. Johns Light Station**, and the second group will go on to the 1859 **St. John's River Lighthouse**. At about

3:30 PM the groups will change places.

5:00 PM The bus brings its second group back to the 1859 lighthouse, picks up the group there and departs for St. Augustine.

6:30 PM The bus arrives back at the Ponce de Leon Resort in St. Augustine.

cut here.....cut here.....cut here.....cut here.....cut here.....cut here.....cut here.....cut here.....cut here.....

TOUR OF THE NORTHEAST FLORIDA LIGHTHOUSES JULY 18-19, 2002

(RESERVATION DEADLINE: TUESDAY, JUNE 25, 2002)

NO PHONE OR E-MAIL REGISTRATIONS; YOU MUST RETURN THIS FORM TO REGISTER.

NAMES of ALL PARTICIPANTS (please print)

ADDRESS _____

CITY _____ STATE _____ ZIP _____

PHONE: HOME () _____ OFFICE () _____

E-MAIL: _____

Number of persons (double occupancy) _____ x \$300.00 per person = \$ _____

Number of persons (single occupancy) _____ x \$400.00 per person = \$ _____

Hotel Room: Double or Single _____; Smoking or Non-Smoking _____

PLEASE MAKE YOUR CHECK OR MONEY ORDER PAYABLE TO THE FLORIDA LIGHTHOUSE ASSOCIATION, INC., AND MAIL THIS FORM AND YOUR PAYMENT TO:

David and Alice D'Amicol; 128 Peacock Drive, Altamonte Springs, FL 32701
(321) 217-8958; adamicol@cfl.rr.com