



the FLA FLASH

A quarterly publication of the Florida Lighthouse Association, Inc.
www.floralighthouses.org

Presidents Message

Dear Fellow Lighthouse Enthusiasts,

Great News! The Citizen's Support Organization for the Cape St. George Lighthouse is up and running. They have applied for membership in the FLA and have asked us to partner with them in saving their lighthouse. We look forward to the opportunity to work along side them in their effort.

What a great meeting we had a Boca Grande. A big thank you to Kathleen Rohrer for the work she did to make this meeting a success. The reminisces by Dian Miller and Robert Johnson were very enjoyable. And another thank you to our members who were patient in allowing the presentation to be video taped for future use by the Barrier Island Parks Society.

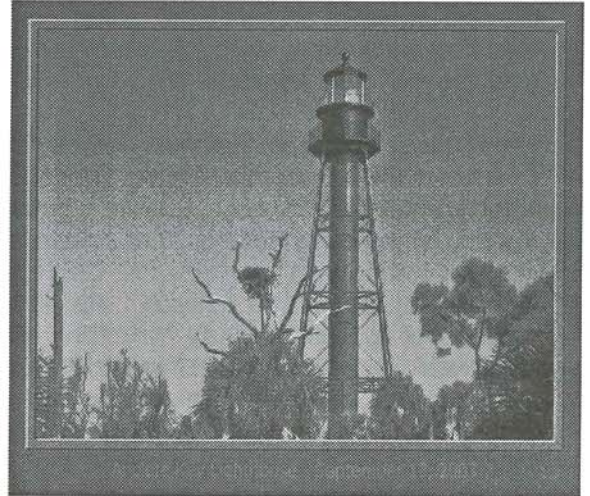
It was a new experience for us to have the meeting in the afternoon with an evening social event. The result was very good and we received much positive feedback. Thank you to all who were involved in the planning and the carrying out of the event. The climb into the light room was a special treat for our raffle winners.

We are going to use an afternoon meeting format again for the meeting in April at Anclote Key. With the boat trips to the lighthouse, it made more sense to have the meeting in the afternoon. We share in the excitement of the new acrylic replica Fresnel Lens recently installed in the Anclote Key Lighthouse and are looking forward to a great trip. Make sure you get your reservation in because that trip will be limited to 100 people due to the boat limitations.

Also, begin making plans for the St. Marks meeting in July. We have a program lined up in which we will learn much about lighthouse restoration using that lighthouse as the prime example. That meeting will be unique also in that we will actually meet in Tallahassee where we will have facilities to handle a larger meeting and then will caravan down to the lighthouse.

Just as a reminder, in the last few years, we instituted a policy that required reservations for meetings and a policy of no refunds for members who signed up but were not able to attend. Obviously, those were implemented to cover the Association in the expense we incur putting on a meeting. It is important that we know how many members will attend a meeting. We plan facilities for the meeting and lunch based on anticipated attendance. In addition, we make financial commitments based on the registrations we receive and if we have expensed the money, we can't get it back if a member doesn't attend.

Continued on Page 4



Contents:

Presidents Letter	1
Boca Grande Meeting Minutes	2
Specialty License Plate	5
Quarterly Meeting Notice	7
Florida Lighthouse Reports	8
Newsworthy Notes	11
New Members	12

1st QUARTERLY MEETING - 2005 - OF THE FLORIDA LIGHTHOUSE ASSOCIATION, INC.

Date: January 15, 2005
Time: 1:00 p.m.
Place: Boca Grande, Florida

President and Chairman, Gene Oakes, called the meeting to order at 1:45 p.m. After greeting all members and visitors, Gordon Levi of Pensacola was asked to give the Invocation

Gene then introduced Kathleen Rohrer Executive Director of the Barrier Island Parks Society, and she warmly welcomed the FLA. Kathleen explained the makeup of the Barrier Islands Park System and then introduced the guest speakers, Ms. Dian McKeithen Miller and Mr. Robert W. Johnson. Ms. Miller is the daughter of lightkeeper, Cody McKeithen. She lived for several years at the Boca Grande Lighthouse as a child and has many fond remembrances of those days. Mr. Johnson was the third generation of Johnson's to serve as a harbor pilot in the Charlotte Harbor. Ms. Miller and Mr. Johnson were childhood friends. A question and answer period was held from the audience after the presentation.

President Gene Oakes then proceeded with the reports, and asked for a motion to dispense with the reading of the Minutes from the October 9, 2004 meeting, which was made, seconded and approved.

Officers absent and not making reports were Mr. Eric Sharp, Executive Vice President and Mr. George Diller, Treasurer.

The Vice President for Membership, Ms. Diana Smith, presented a report on the number of members and the number of family memberships. Memberships are on the rise.

Charley Knox gave a report on fund raising. Lots of the merchandise was put on sale so new merchandise can be purchased for future meetings.

The Vice President for Events, Ms. Gayle Stemac, reported that we will hold the April 16th quarterly meeting at Anclote Key. Details will be forthcoming in the newsletter. We will boat to the key in two waves. About 100 people will be allowed to climb the lighthouse and see the new acrylic replica

Fresnel lens. The program will hopefully be a presentation by the builder of the replica lens. She also reported that the July 16th quarterly would be held in Tallahassee with an afternoon motor trip to the St. Marks lighthouse. Speakers at that meeting will be Mr. Ken Smith, lighthouse restoration architect, from Jacksonville.

Plans are in the works to possibly ask Amelia Island to host the October meeting. This location is still in the discussion phase and future announcements will be held at the upcoming meetings.

Gayle discussed the cruise survey next and said she received minimal response to the survey. Judie Trotter suggested that if we want to do a cruise it be either before or after our FLA meeting and not used as the meeting. Accordingly, it was announced that the Board decided to forego a cruise meeting for October 2005. Members voiced a desire to reconsider for a future meeting. It was suggested and agreed that a sign up sheet would be made available in the afternoon at the lighthouse for members to continue to register their opinion.

Ms. Carey Baxter of the Army Corps of Engineers who made a presentation of the archeological work currently underway at the Cape Canaveral Lighthouse. They are attempting to locate the original sites of all former keepers' dwellings as well as the location of the first lighthouse at Cape Canaveral.

Committee Reports were given next. Committees not making reports were the Photography Committee and Newsletter Committee.

Mr. Tim Veard of the Website Committee reported on the new "look and feel" of the website. He reported that we have successfully implemented the membership database online for use by the VP for Membership and by the President. Results have been very favorable. He also reported that we would soon have available a "members only" section. That feature will only allow dues paid members in and will require a password that will be given upon the first entry to the section. Available in that section will be driving directions to all of

Florida's lighthouses and member information. It was emphasized that member information will only be given out with the member's permission. The site will not disclose information regarding members without their explicit approval.

Mr. Hib Casselberry (Hillsboro Inlet) and Ms. Dianne Levi (Pensacola) of the Education Committee presented this report. The Association will sponsor prizes for the Escambia County Historical Fair at the Elementary School Level.

President Gene Oakes made a report for the License Plate Committee. He reported that we missed the 2005 Legislative Session because we did not garner the funds necessary to apply or obtain the required signatures. We will renew the attempt for the 2006 Legislative Session. 2005 will become a major fund raising year for this project.

Gene Oakes presented the President's Report and announced that the Board had voted to join the Florida Trust for Historic Preservation at the \$100 level. We intend to actively participate in the functions of the Trust in order to garner recognition of the Association.

He announced that 2005 Photo Contest forms had been included with the agenda handed out at the registration. There will be a 2005 Photo Contest following the rules in the handout. Because there were only two submissions to the 2004 contest, there were no awards given in 2004. Those two submissions are automatically rolled into the 2005 contest.

Author Tim Ohr is seeking photographs of Florida's lighthouses to be included in a book he is writing entitled "Florida's Fabulous Lighthouses". It is the lighthouse submission in a series of books on Fabulous Florida. He will pay \$75 per photo for all selected to be included. In order to accommodate Tim's request that he not have to work with individual members, President Gene Oakes has appointed Beverly Oakes of Jacksonville to be Tim's coordinator for this project. She will develop a method by which to catalog submissions and make arrangements regarding copyright privileges.

He next announced that the Association will man a booth at the Central Florida Fair to be held from March 3rd until March 13th. Mr. Eric Martin of Orlando has been appointed to coordinate this

effort. Mr. Martin is soliciting members to help staff the booth. The booth will be open 4pm until 10pm weeknights, 10am until 10pm on Saturdays and 11am until closing on each of the Sundays. The Association will be paid \$250 to staff a booth.

It was next announced by Gene that the Association will man a booth at the Lighthouse Festival to be held on March 11th. Mr. Charley Knox will coordinate that event.

He announced that the Board had voted to invest funds in golf shirts to be sold to members, through lighthouse gift shops and through retail outlets. We will purchase two dozen shirts in various sizes and colors in the initial offering. One dozen will bear the FLA logo with "Florida Lighthouse Association" as the imprint. One dozen will bear the lighthouse from the License Plate model with "www.saveourlights.com" as the imprint. Shirts should be available by the April quarterly meeting.

He announced that we have a new schedule for getting information to the *FLASH* Newsletter Committee for inclusion in the newsletter. The schedule will be to get Newsletter items to the committee by the 2nd Friday of the month following a quarterly meeting month. That would be February, May, August and November. The newsletter will go to the printers on the 3rd Friday of the same month.

President Gene Oakes presented to Ms. Kathleen Rohrer a check in the amount of \$750 made out to the Barrier Island Parks Society as a contribution toward the repair work from Hurricane Charley of 2004. This represents an additional \$500 over and above the normal contribution to lighthouses hosting FLA quarterly meetings.

Lighthouse Reports provided were:

Anclote Key – Wayne Hawes
 Hillsboro – Hib Casselberry
 St. Augustine – Rick Cain
 Reef Lights – Rick Schulze
 Mayport – Charley Knox

A raffle was conducted to present door prizes. Available as prizes were two Harbor Lights Lighthouses and two beautiful Paul Bradley Prints.

A second raffle was conducted to identify winners that would be allowed to enter the lantern room of the Boca Grande Lighthouse during the evening reception. Twenty winners were drawn from among the tickets.

Upon the completion of the raffles, President Gene Oakes declared the meeting adjourned. We then retired to the Boca Grande Lighthouse veranda for a wine and cheese reception to await the illumination of the lighthouse lantern for the evening.

President's Letter – continued:

And, please make sure you give your meeting registrations to the Stemacs. Giving it to someone else doesn't guarantee it will get processed correctly or on time.

In other news, we have made much administrative progress in the last three months. Tim Veard and Diana Locke-Smith have been busy putting our membership database on-line. While that on-line feature is not visible to our members, it has really helped your officers in tracking and managing the records for membership. These two individuals have developed a good methodology for processing. It has allowed Diana to implement new procedures for recording dues checks and getting member packets mailed back out. Thank You Diana.

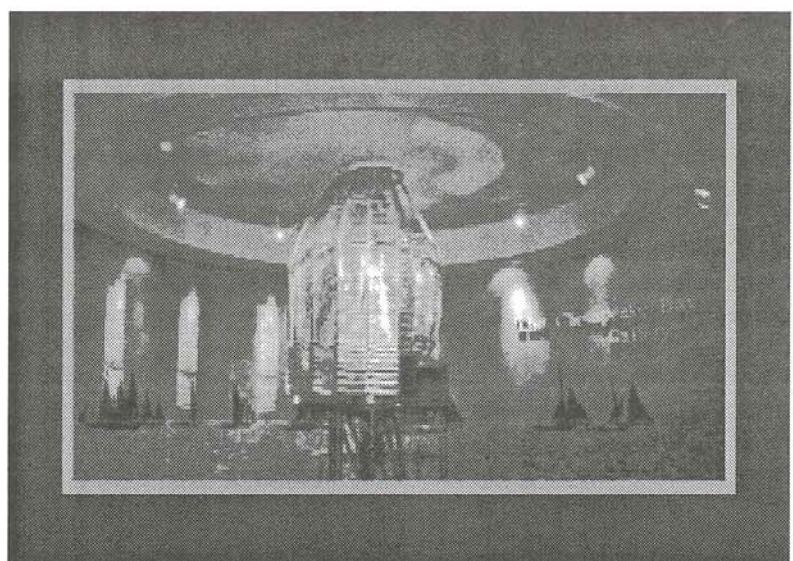
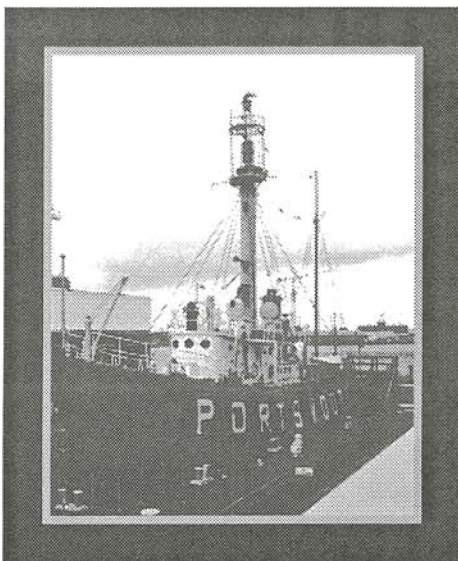
To help take some of the load off of her during this conversion, I have personally undertaken the task of trying to recover expired memberships from the past two years. Some of the new features Tim and Diana built into the new on-line membership database has really helped in that effort. Consequently, at this writing, we have recovered over 40% of those memberships we lost in 2004.

At the same time, Tim has built a new "Members Only" section for the website. If you have not checked it out yet, please do so. When you try to use it, use the Login button to get started. It will prompt you to establish a password. After that, it is yours to explore – as long as your dues are current. Thank You Tim for all your hard work!

One last request – In working the membership renewals, meeting registrations and the Annual Appeal in the last newsletter, we received some payments that were difficult to distribute. We request that you mark your checks or envelopes clearly regarding the contents so that we get it to the right person.

See you at Anclote Key – Gene O.

PS: We are still looking for volunteers. We have much to do.



Specialty License Plate Committee Report

As many of you know, we did not make the 2005 Legislative Session with our License Plate project. The primary reason was lack of funds for the application and to pay for the scientific survey.

We held discussions with potential donors of funds but donations from benefactors were not forthcoming. A primary reason was due to the answer given when asked how much money we had raised so far. That amount is meager in comparison to what we need. Benefactors are not interested in giving funds when the Association and its membership do not seem serious.

It is obvious that we must get serious regarding raising funds for this project. While the amount may seem unachievable, any accumulation of funds will prime the pump, so to speak, for potential large donors.

We established the License Plate Project as the Annual Appeal in 2004. Unfortunately, that appeal did not receive the same level of support as is given when a specific lighthouse is targeted as the Annual Appeal recipient. We are making the License Plate Project the target of the Annual Appeal again this year and appeal to your generosity in supporting this very worthwhile project. If successful, this

project will generate many times its cost in restoration funds for our lighthouses.

At the same time, we will undertake a campaign to advertise our project in a broader base of publications. The audiences for this effort will be lighthouse enthusiasts from outside Florida and those who are interested in historic building preservation.

At the last quarterly meeting of the Board of Commissioners, the delegates approved the production of golf shirts bearing the FLA logo and the emblem from the proposed license plate with all funds going directly toward the License Plate Project. We hope to have sample shirts available at the April general membership meeting. The plan is to get opinions of the shirts from members, sell the samples to members and take orders for additional shirts. If the shirts get a good reception, we hope to wholesale them to retail outlets.

If you have ideas regarding potential fundraisers, please contact a member of the committee. We will consider any and all ideas.

If you have not done so, please visit www.saveourlights.com to learn how you can contribute.

The following individuals and organizations have contributed to the FLA Florida Specialty License Plate Fund:

George W. Evans
John P. Sullivan
Andrew A. Hunter
George & Joan Irvine
Ronald & Joan Ouellett
Neil Hurley
Elaine Gridley
Eric Sharp
Ruth Erlandson
John Parkhurst
Stan & Mary Farnham
Lighthouse & Historic Preservation Society

Eric & Susan Martin
Jerome P. Miller
Frances Welsh
Jean Pettit
Jack Burrie
Barbara & Ray Hamel
Gene & Beverly Oakes
Patricia Yoder
Bobbie R. Bentley
Elizabeth M. Wilson
Delbert A. Madsen

Lower Suwanee Wildlife Excursions
Kenneth Smith Architects, Inc.
Philip B. Tanev
Joan W. Sampson
Tom & Maureen Workman
Dennis & Gayle Stemac
Eric & Susan Martin
Joan Ouellett
Harold J. Belcher

FLA Florida Specialty License Plate Fund. Visit www.saveourlights.com for details.

FLA Members Only Website Pages

The FLA website recently opened a Members Only section. To access it, click on the MEMBERS button on the left side of the first screen. It's a "work in progress", so expect to see this menu to change. To use any feature, you must first log in. To get your password, click the LOGIN button and then on either link under the password box. You'll be asked a few questions to verify your membership. If you are a "dues current" member, a temporary password will be issued and if we have your correct e-mail address, it will be sent to you. You can immediately log in and pick another password, enter your correct e-mail address and update your profile.

NOTE: you must decide if you want other FLA members to be allowed to contact you. Your contact information is LOCKED until you unlock it. You can separately unlock or relock your phone number, e-mail address and mailing address any

time you wish. Only other FLA members can see what you authorize when they login. Unless you unlock your information, no one can contact you using the Members Only section.

Features currently available are: PASSPORT - keep an on-line diary of the lighthouses you visit (track dates & enter notes). DRIVING DIRECTIONS - click on a lighthouse to get custom directions and a map from your house. FLASH - read past issues of FLA's newsletter. TIPS - our webmaster shares tips about how to get rid of and avoid getting SPAM, scams, hoaxes, worms, viruses and spyware. ALERTS / E-GRAMS - special notices posted by FLA. CAR POOL - list members who live near you to share a ride to a meeting. MEMBER LOCATOR - find another member, see their photo and contact them if they allow you to. Other new features will be added each month.



FLA President Gene Oakes presents a check to Kathleen Rohrer of the Boca Grande lighthouse. The funds will be used for repair of damage from last year's Hurricane Charley.

January 15, 2005

FLORIDA LIGHTHOUSE ASSOCIATION - QUARTERLY MEETING

Anclote Key lighthouse – April 16, 2005

SEE THE LIGHT

The Anclote Key Lighthouse was ceremoniously relit on September 13, 2003 after a massive 1.5 million dollar restoration project. Since the original 3rd order Fresnel lens was nowhere to be found, a modern rotating optic was placed in the lantern room. Everyone heralded the undertaking and thought the lighthouse was as good as it could be. BUT NOT SO !!! The rotating optic wasn't bright enough or good enough. So the restoration project took another step forward and commissioned Enberg Mold and Tools in Jacksonville to make a replica acrylic lens. They met the challenge and in November 2004, a smaller replica 4th order lens was installed in the tower. In addition, a permanent residence has been completed for the park ranger, Connie Wiesehan, who now resides on the island. Anclote Key is truly a "shining example" of lighthouse restoration at its finest. On April 16, 2005 we will have the rare opportunity to see history in the making as we cruise out to the island. Some participants will also have the opportunity to climb the tower and see the replica lens first-hand.

Our day will begin at the dock of the Anclote River Park off Anclote Blvd. and Baillies Bluff Rd. in Pasco County as we board *The Island Star* of Sun Line Cruises for a fully narrated nature tour of the river on our way out to the Gulf and on to Anclote Key. The boat is handicap accessible, with open and enclosed viewing areas and has restrooms. We will be making two (2) trips out to the island – the first boarding at 7:30 and the second boarding at 8:30 - so please provide a **stamped, self addressed envelope** with your reservation. After the April 2 reservation deadline has passed, you will receive a confirmation of your reservation as well as a time assignment for your party to be at the dock for boarding. Anyone assigned to the first departure and missing that departure will **not** be boarded on the next boat as it will be filled to capacity. Due to Park Service requirements, climbing the tower will be on a limited basis. On the journey out to the island, tickets will be provided on each boat trip to anyone interested in climbing and there will be a

random drawing of twenty tickets per boat to select the winners.

Our luncheon and meeting will begin at 12 noon at Niko's MULLET BOAT SEAFOOD AND STEAK RESTAURANT, 701 No. Pinellas Ave. (Alt 19), Tarpon Springs. We are privileged to have Mr. Dan Spinella as our guest speaker. He is an engineer employed by Disney who was instrumental in recreating the optics for the replica acrylic Fresnel lens. He has also worked with the ongoing lens project at the Ponce Inlet Lighthouse.

The cost for this meeting including boat transportation to and from Anclote Key, facility rental, luncheon, and donation to the Anclote Lighthouse is **\$40.** per person. Seating capacity for the boat and restaurant is 100 persons.

Meeting Agenda

7:30 - First boat departure for Anclote Key from Anclote River Park
 8:30 - Second boat departure
 12:00 - Luncheon at the MULLET BOAT Restaurant
 1:00 - Quarterly meeting of the Florida Lighthouse Association

Hotels

DAYS INN

40050 US Hwy 19N

Tarpon Springs, Fl. 34689

800-321-4062 or 727-938-8400

website: daysinntarpon.com

Discounted rate of \$42. per night plus tax. Please mention FLA when registering to secure discounted rate. There is an IHOP on the same property that will provide a 10% discount for meals if staying at Days Inn. They will open their doors at 6:30am on the morning of the meeting to accommodate any first departure guests who want breakfast.

Other hotels in the area:

Hampton Inn

Tarpon Shores Inn

Holiday Inn

The Florida Lighthouse Reports

A. Amelia Island. No New Report.

B. St. Johns. No New Report.

C. St. Augustine. No New Report.

D. Ponce Inlet. No New Report.

E. Cape Canaveral. No New Report.

F. Jupiter. See Lighthouse News on page x.

G. Hillsboro Inlet. No New Report.

H. Cape Florida. No New Report.

I. Reef Lights. No New Reports.

Key West Light -- No New Report.

Loggerhead Key Light -- No New Report.

Tennessee Reef -- No New Report.

Molasses Reef Light "10" -- No New Report.

Northwest Passage Lighthouse & Tortugas Harbor -- No New Report.

Rebecca Shoals Lighthouse -- No New Report.

Dry Tortugas Lighthouse -- No New Report.

Dry Tortugas Anchorage Light and Fort Jefferson, Garden Key
No New Report.

J. Key West. No New Report.

K. Sanibel Island. No New Report.

L. Port Boca Grande. No New Report.

M. Boca Grande Rear Range Light. No New Report.

N. Egmont Key. No New Report.

O. Anclote Key. No New Report.

P. Cedar Keys. No New Report.

Q. St. Marks. At this point nothing has been done with the lighthouse, except change of light bulbs since hurricane season and green mildew is growing on the outside. There hasn't been any news about a transfer date of the lighthouse from Coast Guard to the Florida Wildlife Refuge. FLA will be visiting the lighthouse in July.

R. Crooked River. In August John Canetta drove to Pensacola to receive from Chief Ashley Gordon, CG ANT Pensacola, 2 lighthouse artifacts that the Carrabelle Lighthouse Association will use for display purposes. The Coast Guard unit donated the base and lens for a 150 mm marine beacon, most likely used on a lighted buoy, and a 250 mm beacon. The Carrabelle Lighthouse Assoc.

greatly appreciated these items.

December 11th, the annual Parade of Boats took place on the Carrabelle River and the Carrabelle Lighthouse Association had an entry in the parade for the first time. CLA members Mary and Jerry Katser loaned their pontoon boat to the group and President Ron Treutel constructed a to-scale replica of the Crooked River Lighthouse. It was 10 feet tall, made of PVC pipe and painted red and white to match the day mark of the Crooked River Lighthouse. The replica and the Katsers' boat was decorated with Christmas lights and the lighthouse even had a flashing beacon at the top. The CLA won a trophy and a \$100.00 award for the best entry in its class. The CLA hopes to permanently display the lighthouse model in a small landscaped square along HWY. 98 for everyone to see as they enter Carrabelle.

S. Cape San Blas. Please see next page.

T. Cape St. George. A local group has been formed and are finalizing articles of incorporation and by-laws for a non-profit organization for the Cape St. George lighthouse. The president of the group is Dennis Barnell. Future plans call for a relocation study of the lighthouse as well as relocation of the remains of the Keeper's house and oil house. Erosion still continues around the lighthouse structure, but sand from the summer/fall storms covered the remains of the oil

house and the keeper's house. However, the chimney at the site of the keeper's house did fall down during the storms. The contractor who straightened the lighthouse a few years ago has finally removed all the old, rusting heavy equipment left on the island.

V. Pensacola. Still waiting for repairs from Hurricane Ivan. December 17th the Colonial

Dames of the 17th Century, Fort San Carlos Chapter Pensacola, unveiled a commemorative marker at the Pensacola Lighthouse located at the Naval Air Station, Pensacola. A dedication ceremony of the bronze plaque listing the history of the lighthouse was attended by the Colonial Dames of the 17th Century State President, Nancy Watkins of Tampa, military and local government officials as well as special

guests. One of the projects of President Watkins for 2003-2005 is to mark Florida Lighthouses with commemorative plaques in keeping with a primary objective of the organization preservation goals. The plaque was funded by chapter member Hope Glover and husband Wilton Glover, a Pensacola native.



On December 16, 2004, The Colonial Dames of the 17th Century, honored Pensacola Lighthouse with a new historical marker. From left to right, Nancy Watkins, Hope Glover and Elizabeth Scott,

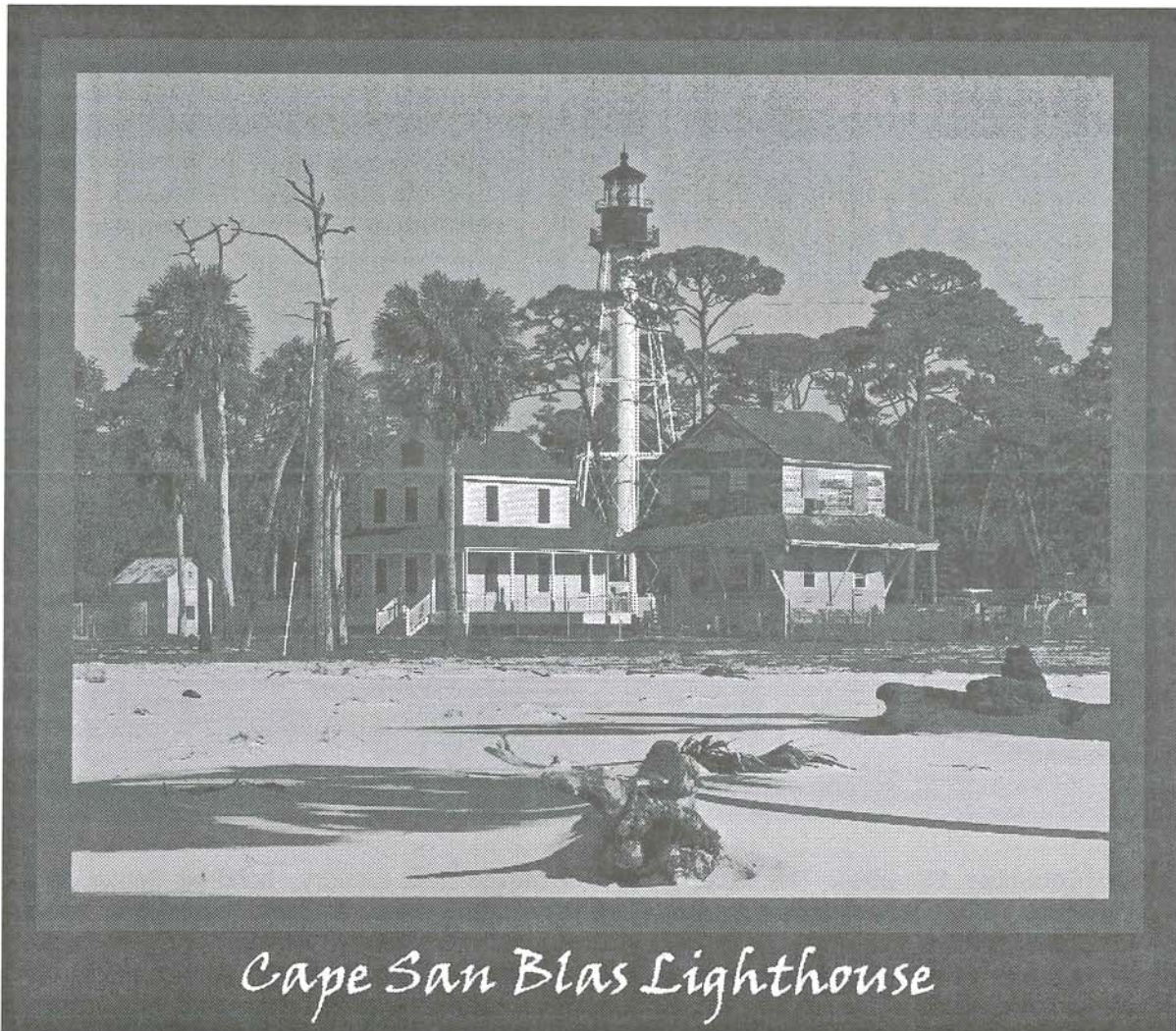
Nancy is President of the Florida State Society, Hope is Chairperson for Preservation of State Historic Sites and Elizabeth is President of the Fort San Carlos Chapter of the Colonial Dames of the 17th Century.

S. Cape San Blas.

The St. Joseph Historical Society is elated to report that the lighthouse keepers' quarters, affectionately know as "Sleeping Beauty", was moved on February 3, 2005 to her final resting place. (photo below) Restoration of the 1917 structure has begun and it is anticipated that the renovation will move quickly.

Architectural and Engineering studies of the lighthouse have also begun.

Each of these projects has been funded from historic preservation grants. As with all projects additional dollars are needed. Should you desire to contribute to either project please send your contribution to the St. Joseph Historical Society, Inc., (a 501 (c) 3 entity) - P. O. Box 231 - Port St. Joe, FL 32457.



Cape San Blas Lighthouse

Newsworthy Lighthouse Notes

Florida's Fabulous Lighthouses

Tim Ohr, known for his "Florida's Fabulous" books, contacted FLA about our interest in providing him with lighthouse pictures for possible inclusion in his next book which will be about Florida's Fabulous Lighthouses. If included, your picture could earn you \$75!!

As discussed and approved in our January 2005 meeting, this opportunity is being made available to our FLA membership.

Guidelines: It would be best if the photos submitted were either transparencies processed by an E-6 lab or digital work placed on a CD. A photograph or chrome can be used, but the quality is lost in processing.

So browse through your pictures and look for those once in a lifetime shots where you were there at just the right time to capture a remarkable photo or to

get some of the hard to get to offshore lighthouses. You may even want to consider submitting those stormy weather shots.

All photos submitted will be considered and hopefully selected by the editor, Winston Williams.

Beverly Oakes has agreed to coordinate this effort for FLA. If you are interested, submit your work by sending to her at 5614 La Moya Avenue, Jacksonville, Florida 32210 or delivering to her at the April meeting at Anclote Key. Deadline for submissions is April 30, 2005.

Please be sure to include your name, address, phone number and an indication of your willingness to release copyright privileges to the photo.

Wouldn't it be great to see our member's photos published!

Photo Contest

Included in this newsletter is an application and rules for the 2005 Photo Contest. Come on members, let's make this the best photo contest yet. Show us your best stuff!

Reference books on Florida Lighthouses:

1. Florida Lighthouse Trail, Thomas W. Taylor Editor, Pineapple Press-Sarasota, FL, 2001
(This book gives detailed information on location, history, what is there now in detail, etc.)
2. Lighthouses of the Florida Keys, Love Dean, Historic Florida Keys Foundation-Key West, 1992
(Latest edition published by Pineapple Press, Sarasota, FL.)
3. Lighthouses, Lightships, and the Gulf of Mexico, David L. Clpra, Cypress Communications, Alexandria, VA, 1997.
4. Guardians of the Lights, Stories of U.S. Lighthouse Keepers, Elinor De Wire, Pineapple Press - Sarasota, FL, 1996 (Includes about 15 to 20 Florida lighthouses.)
5. Florida's Territorial Lighthouses 1821 - 1845, Thomas W. Taylor, Florida Sesquicentennial Publication, Allandale, FL, 1995.
6. Keepers of Florida Lighthouses 1820 - 1939, Neil E. Hurley, Historic Lighthouse Publishers, Alexandria, VA, 1990, & now on a CD.
7. Florida Lighthouses, Kevin M. McCarthy, Univ. Of Florida Press, Gainesville, FL 1990.
8. 1994 Inventory of Historic Light Stations, National Maritime Initiative, National Park Service, Washington, DC, 1994.
9. Florida Lighthouses For Kids, Elinor De Wire, Pineapple Press, Sarasota, FL, 2004

**Florida Lighthouse
Association**
81 Lighthouse Avenue
St. Augustine, FL 32080
Phone: (813) 968-5640 Option 3
Fax: (813) 960-2065
www.floridalighthouses.org
Email: info@floridalighthouses.org

Working to preserve Florida's Lighthouses

Welcome to our new members!

Norman Aberle, Egmont Key Alliance, Inc, Lori and Paul Freiesleben, Art Levy, Timothy C. Ohr, Suzanne Pereira Debbie Roark, Barbara Samuel

Membership year is October 1st through September 30th.

Membership Levels and Dues are:

Circle of Light \$1,000 – Watch Room \$250 –

Commissioner \$100 – Inspector \$50

Keeper (Family) \$35 – Assistant Keeper \$25.00

Photo Credits: Dames of 17th Century ©Gordon Levi, Paul Bradley©Gordon Levi, Anclote Key ©Rick Mau, Gene Oakes ©Gordon Levi, Cape San Blas ©Debbie Hooper, Lightship Portsmouth & 1st Order Fresnel Lens ©Rick Mau.

Used with permission, all rights reserved.

The *FLA FLASH* is a quarterly publication of the FLORIDA LIGHTHOUSE ASSOCIATION, INC., and is a benefit of membership in the organization. The FLA is a non-profit Florida corporation that promotes the preservation of Florida's lighthouses and interprets the history and significance of those lighthouses and of Florida's unique maritime heritage. For information, contact:

Florida Lighthouse Association,
81 Lighthouse Ave., St. Augustine, FL 32080

Phone: (813) 968-5640 Option 3

Fax: (813) 960-2065

WebSite:www.floridalighthouses.org

E-mail:info@floridalighthouses.org

Gene Oakes, President

Eric Sharp, Vice President

George Diller, Treasurer

Diana Locke, V-P Membership

Dennis & Gayle Stemas, V-P Events

Charlie & Lottie Knox, V-P Fund Raising

Neil E. Hurley, Historian

ANCLOTE KEY LIGHTHOUSE

April 16, 2005

EVENT RESERVATION

Reservation Deadline: April 2, 2005

NAMES OF ALL PARTICIPANTS (please print):

ADDRESS: _____

CITY: _____ STATE: _____ ZIP: _____

Email: _____

CHOICE OF ENTRÉE:

(Includes mini Greek salad, beverage, dessert, tax and gratuity)

- 1) Pasta Primavera w/vegetables total # _____
- 2) Shrimp Scampi Sautéed in Garlic Butter total # _____
- 3) Chargrilled Chicken Breast w/rice pilaf total # _____
- 4) Stuffed Flounder, crabmeat dsq, gr beans total # _____
- 5) Prime Rib Au Jus w/garlic mashed potatoes total # _____

Total number of persons _____ X \$40.pp = _____

Please make your check payable to the FLORIDA LIGHTHOUSE ASSOCIATION. Mail this form and your payment to:

Dennis and Gayle Stemas
10847 Duck Hook Ct.
San Antonio, FLORIDA 33576

- The FLA has a no-refund policy in effect. Receipt of payment confirms reservation.
- All reservations received after the deadline will be returned.
- Please include a self-addressed stamped envelope with your payment.

FLORIDA Lighthouse ASSOCIATION

2ND ANNUAL PHOTOGRAPHY CONTEST

RULES

1. Contestant must be a Florida Lighthouse Association (FLA) member.
2. Photograph must be of a Florida Lighthouse.
3. Entries must be received by September 15th, 2005.
4. Entry fee is \$5.00 per photograph. Checks or money orders are to be made out to Florida Lighthouse Association.
5. A maximum of 3 photos may be entered.
6. All entries become the property of FLA and will not be returned.
7. Photographs may be in color, black and white, sepia, or a combination. No negatives or transparencies, please. Digital enhancement or manipulation is allowed.
8. Photograph must be un-mounted and may **NOT** be any larger than 8X10.
9. Name, address, telephone number and name of lighthouse must be on a label, placed on the back of the photograph.
10. Mail entries to:

FLA Photo Contest,
C/O David Hanko Photography, Inc.,
11220 Park Blvd.
Seminole, FL 33772

Name: _____

Address: _____

Phone: _____

Lighthouse: _____

Name: _____

Address: _____

Phone: _____

Lighthouse: _____

Name: _____

Address: _____

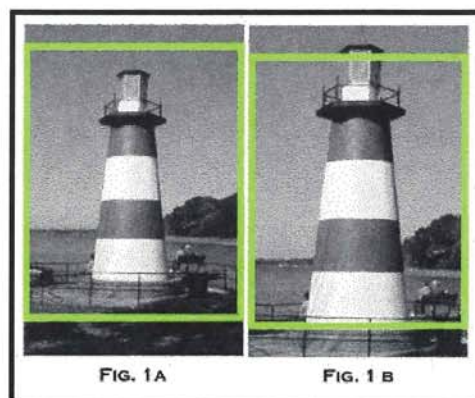
Phone: _____

Lighthouse: _____

Tips for the Photo Contest.

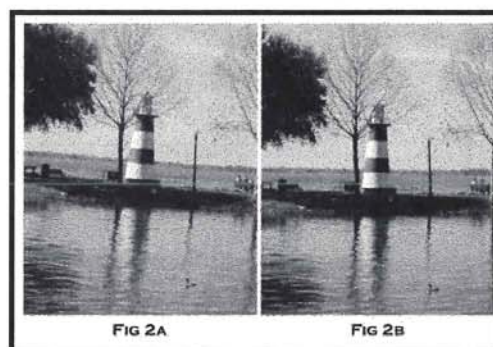
Tip 1

Your entry must be no larger than 8 X 10. Allow a little extra room on the top and bottom of your image for cropping (see fig. 1A and 1B). Or, ask your photo processor to print your image as a full frame 8 X 10 photo (this would be a 10 X 6.67 inch image with a white border on each side to make it 8 X 10).



Tip 2

Watch your horizons! Your print should have a level horizon (see fig. 2A and 2B). If this is difficult due to uneven terrain or a rolling boat, try to leave extra room around your image. Then ask your photo processor to turn the negative and print it with a level horizon.



Tip 3

Lighthouses are night beacons. When ever possible, try to photograph it in the evening or at night for a more dramatic image. A note of caution, do not trespass on private or government land to do this. You could end up arrested, or worse!

